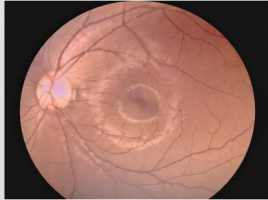


OCT Part

Axial resolution	10 um
Lateral resolution	20 um
Depth at tissue	~ 2 mm
Scan range (max)	6*6mm and 9*9 mm
Diopter range	+/-15 D
Scan speed	80 KHz
Minimum pupil diameter	2.5 mm
B-scan picture	1024 x 512 pixels



Fundus Camera Part

Image resolution	5M pixels
Field of view	45 degrees
Minimum pupil diameter	4 mm
Diopter range	+/-15 D

Interface

HDMI
Wi-Fi

Probe

L275 x W90 x H74 mm
Weight: 0.5 kg

Main box

L234 x W254 x H108 mm
Weight: 4.5 kg

Combo OCT for the Entire Retinal Imaging Multiple configurations for portable and desktop application

Flexible design to fulfill various operating scenarios!!

- Probe
- Screen
- Main box
- Chin rest (with motor module)



To combined with a 10.1" panel as a portable OCT



To integrate with the MiiS chin rest and an auto-aligning 3 axis module



Emergency



Pediatrics



Ward round



Clinics



Telemedicine



Education



Surgery



Medimaging Integrated Solution Inc.

Tel +886 3 579-8860
 Fax +886 3 579-8011
 Address 3F, No.24-2, Industry E. RD. IV, Hsinchu Science Park, Hsinchu, Taiwan 30077, R.O.C.
 Website www.miiS.com.tw
 Email sales@miiS.com.tw

