



## DSC 300

### More Features, More Reliable

- Multi-touch (zoom in / out)
- Wi-Fi / Bluetooth module embedded
- HDMI Full HD live stream



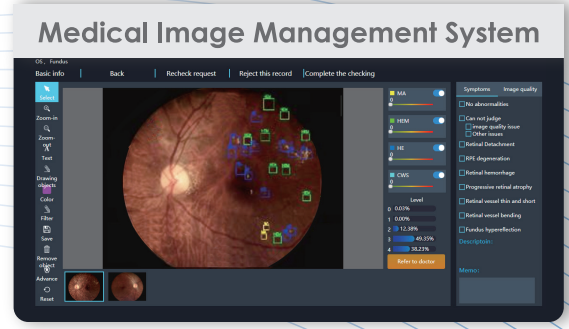
DSC 300 + DIB 100

## DIB 100

- Mark symptoms
- Cyber security Wi-Fi connection
- Quick charging

### Integration For Software And Hardware-AI Screening

AI Diabetic - Retinopathy Screening Total Solution  
Best choice of AI screening pictures provider :  
Horus hand-held fundus camera, support real-time features.



## Through the Scope

<b>DEC200</b> Fundus camera 	<b>DGC 200</b> Eye surface camera 	<b>DEA 200</b> Eye anterior camera 
--	---	--

## DIB 100 User Interface



Power button

Indicator:  
Power light (**blue light**)  
Analyzing (**white light**)  
Connection (**amber light**)

## Specification

Item		DSC 300
CPU		DM388
Sensor		5 Megapixels (2560*1920)
LCD monitor		3.5" capacitive touch panel ; multi touch
Microphone		○
Speaker		○
File storage		Micro SD card (2 ~ 32G)
Interface	Wi - Fi	Embedded
	Bluetooth	Embedded
	Micro HDMI (1920 x 1080)	○
	Magnetic charger	○
	Mini USB	○
Function	Auto focus	○
	Auto capture (DEC 200 only)	○
	Auto exposure	○
	Quality check	○
Lens	DEC 200	○
	DEA 200	○
	DGC 200	○
Picture resolution		2560 x 1920
Video resolution		2560 x 1920
UVC resolution		640 x 480
Item		DIB 100
AI performance		1.3 TFLOPs
GPU		256-core NVIDIA Pascal™ GPU
CPU		Dual-core NVIDIA denver 264-bit CPU and quad-core ARM® Cortex®-A57 MP core
Memory		8GB 128-bit LPDDR4 memory
Storage		32GB eMMC 5.1
Wi-Fi		Embedded
Indicator		3 LEDs: blue, white, amber
Power		12V@3A
Charging capability		5V@1.2A

• Information contained in this leaflet is subject to change without prior notice.



**Medimaging Integrated Solution Inc.**

- Tel: +886-3-5798860
- E-mail: sales@miis.com.tw
- www.miis.com.tw
- 3F, No.24-2, Industry E. RD. IV, Hsinchu Science Park, Hsinchu, Taiwan 30077, R.O.C.

